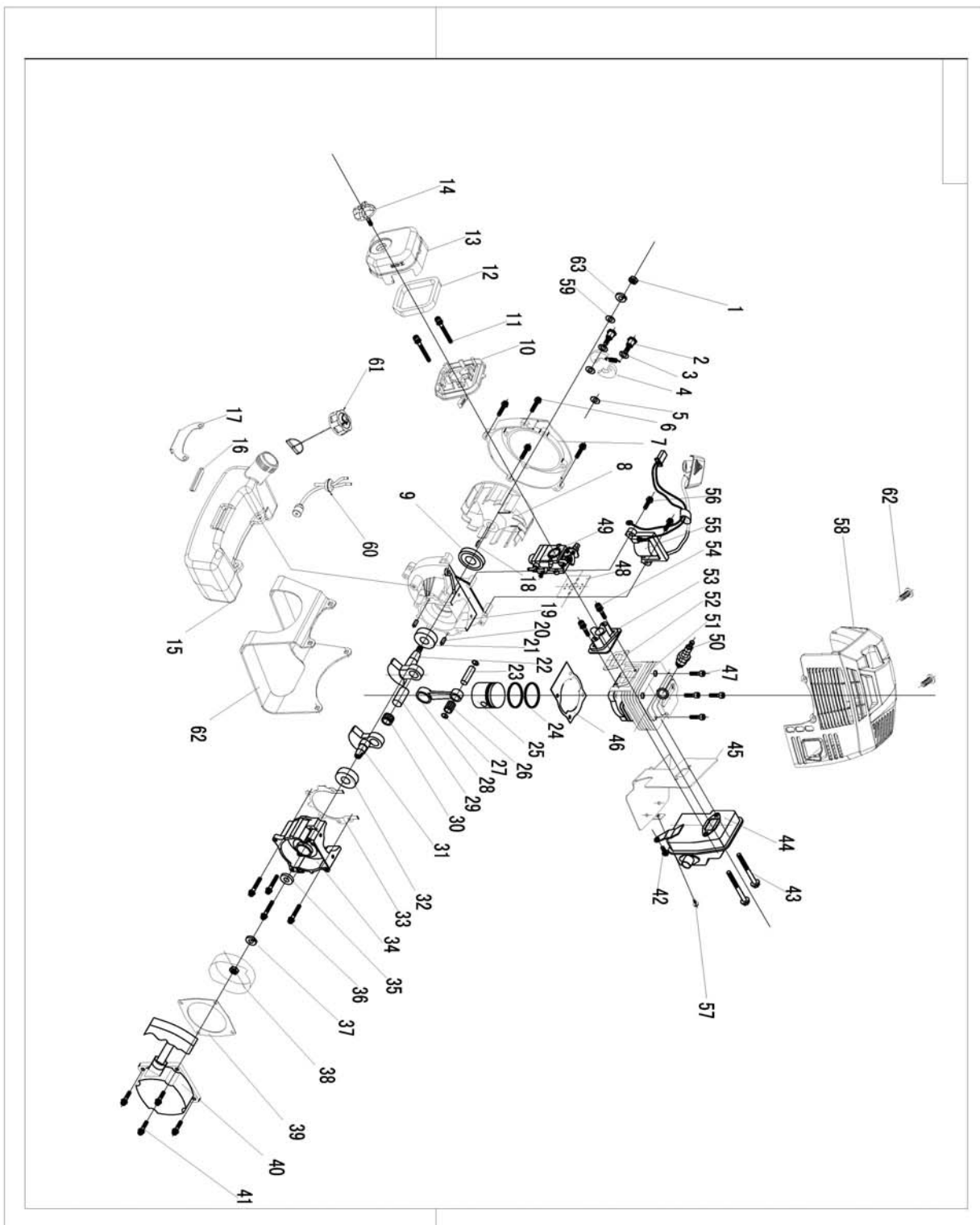


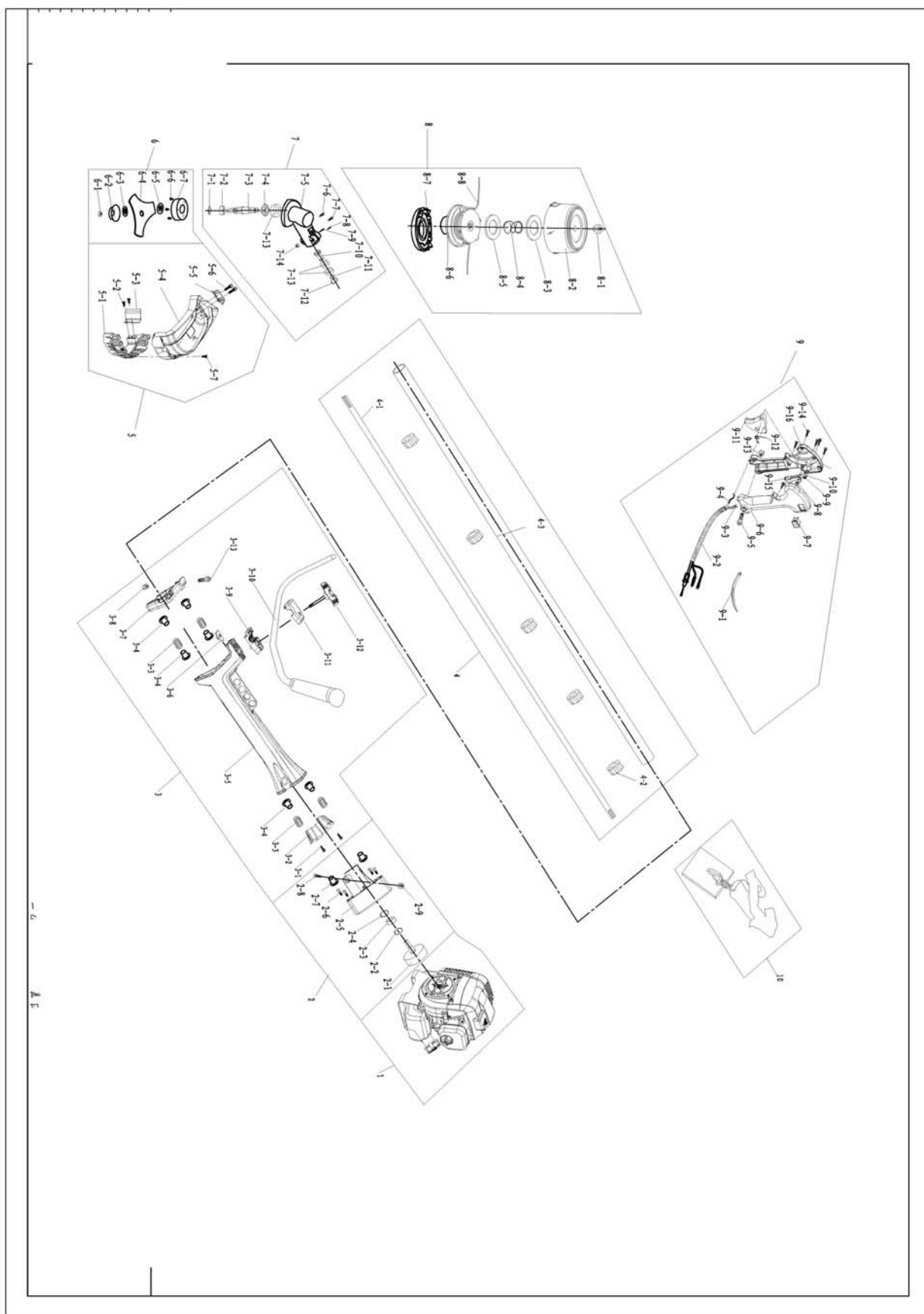


C



Spare parts list for RPB430 engine			
Pos no	reference	English name	QTY
1	1E40F-5-1	Nut M8	1
2	1E40F-5-2	BOLT M8x25	1
3	1E40F-5-3	WASHER ϕ 10x1.5	2
4	1E40F-5-4	Clutch part	2
5	1E40F-5-5	WASHER ϕ 8x ϕ 16x1.5	2
6	1E40F-5-6	Bolt M5x25	4
7	1E40F-5-7	Cover	1
8	1E40F-5-8	Rotor	1
9	1E40F-5-9	Oil seal ϕ 30x ϕ 15x7	1
10	1E40F-5-10	Body Ass'y	1
11	1E40F-5-11	Bolt M5x50	2
12	1E40F-5-12	Element	1
13	1E40F-5-13	Cover Ass'y	1
14	1E40F-5-14	Knob	1
15	1E40F-5-15	Oiler 40F-5E	1
16	1E40F-5-16	Oil pot rubber shock	1
17	1E40F-5-17	Oil pot linking piece	1
18	1E40F-5-18	Key 3x5x13	1
19	1E40F-5-19	Crankcase left	1
20	1E40F-5-20	Pin ϕ 5x10	4
21	1E40F-5-21	Bearing 6202	1
23	1E40F-5-22	Pin	1
24	1E40F-5-23	Ring	2
25	1E40F-5-24	Piston	1
26	1E40F-5-25	Bearing KBK 10x13x15	1
27	1E40F-5-26	Ring	2
22	1E40F-5-27	Crankshaft left	1
28	1E40F-5-28	Link	1
29	1E40F-5-29	Crank pin	1
30	1E40F-5-30	Bearing KZK 15x20x10	1
31	1E40F-5-31	Crankshaft right	1
32	1E40F-5-32	Bearing 6202	1
33	1E40F-5-33	Gasket case	1
34	1E40F-5-34	Crankcase right	1
35	1E40F-5-35	Oil seal ϕ 22x ϕ 12x7	1
36	1E40F-5-36	Screw M5x20	4
37	1E40F-5-37	Washer ϕ 8	1
38	1E40F-5-38	Fulley	1
39	1E40F-5-39	Gasket	1
40	1E40F-5-40	Reciol Ass'y	1

41	1E40F-5-41	Screw M5x20	4
42	1E40F-5-42	Screw M5x12	1
43	1E40F-5-43	BOLT M6x55	2
44	1E40F-5-44	Muffler Ass'y	1
45	1E40F-5-45	Plate	1
46	1E40F-5-46	Gasket base	1
47	1E40F-5-47	Bolt M5x20	4
48	1E40F-5-48	Plate	1
49	1E40F-5-49	Carburator	1
50	1E40F-5-50	Spark plug LD BM6A	1
51	1E40F-5-51	Cylinder	1
52	1E40F-5-52	Gasket insulator	1
53	1E40F-5-53	Insulator	1
54	1E40F-5-54	Screw M5x25	2
55	1E40F-5-55	Coil Ass'y	1
56	1E40F-5-56	Screw M5x20	2
57	1E40F-5-57	Screw M4x8	1
58	1E40F-5-58	Cover	1
59	1E40F-5-59	Washer	1
60	1E40F-5-60	Fuel piee Ass'y	1
61	1E40F-5-61	Oiler cover Ass'y	1
62	1E40F-5-62	Screw M5x12	2
63	1E40F-5-63	Washer φ8	1
64	1E40F-5-64	Oiler holder-Q235	1
65	1E40F-5-65	Bolt M5x20	2



Spare parts list for RPB430 transmission			
Pos no	Reference	English name	QTY
1	WB430-1	engine	1
2-1	WB430-2-1	driven wheel	1
2-2	WB430-2-2	circlip for shaft ϕ 15	1
2-3	WB430-2-3	bearing 6202RS	1
2-4	WB430-2-4	circlip ϕ 35	1
2-5	WB430-2-5	Housing Ass'y	1
2-6	WB430-2-6	Screw M6x35	4
2-7	WB430-2-7	Cushion cover	2
2-8	WB430-2-8	Screw M6x30	1
2-9	WB430-2-9	Bolt M6x12	1
2-10	WB430-2-10	Nut M6	
3-1	WB430-3-1	Screw ST4.2x16	2
3-2	WB430-3-2	Fixed dam-ADC12	1
3-3	WB430-3-3	Spring 65Mn	4
3-4	WB430-3-4	Cushion cover	6
3-5	WB430-3-5	Hand the leader	1
3-6	WB430-3-6	Connecting plate	1
3-7	WB430-3-7	Nut M6	1
3-8	WB430-3-8	Stationary flat	1
3-9	WB430-3-9	Holder B	1
3-10	WB430-3-10	Bike handle- ϕ 19	1
3-11	WB430-3-11	Holder A	1
3-12	WB430-3-12	Knob	1
3-13	WB430-3-13	Bolt M6x35	1
4-1	WB430-4-1	shaaft- ϕ 8 1530m	1
4-2	WB430-4-2	Bush- ϕ 24.5 ϕ 8	5
4-3	WB430-4-3	Pipe	1
5-1	WB430-5-1	Edgings	1
5-2	WB430-5-2	Screw ST4x14	2
5-3	WB430-5-3	Blade	1
5-4	WB430-5-4	Guard	1
5-5	WB430-5-5	Bracket	1
5-6	WB430-5-6	Screw M6x20	2
5-7	WB430-5-7	Nut ST4.8x16	1
6-1	WB430-6-1	Nut M10	1
6-2	WB430-6-2	Cover	1
6-3	WB430-6-3	Holder B	1
6-4	WB430-6-4	3T Blade	1
6-5	WB430-6-5	Holder A	1
6-6	WB430-6-6	Nut M5x12	3
6-7	WB430-6-7	Cover	1
7	WB430-7	Gear case assembly	1

7-1	WB430-7-1	Oil seal- ϕ 20x ϕ 32x5	1
7-2	WB430-7-2	Snap ring ϕ 32	1
7-3	WB430-7-3	Bering 6002RS	1
7-4	WB430-7-4	Shaft	1
7-5	WB430-7-5	Pinion	1
7-6	WB430-7-6	Gearcase-ADC12	1
7-7	WB430-7-7	Screw M6* 12	1
7-8	WB430-7-8	Screw M6* 16	1
7-9	WB430-7-9	Screw M5*25	2
7-10	WB430-7-10	Pinion	1
7-11	WB430-7-11	Snap ring ϕ 10	1
7-12	WB430-7-12	Snap ring ϕ 26	1
7-13	WB430-7-13	Bearing 6000RS	3
8	WB430-8	Bump head assembly	1
8-1	WB430-8-1	Nut-M10x1.25-LH	1
8-2	WB430-8-2	Inner spool cap	1
8-3	WB430-8-3	Washer	1
8-4	WB430-8-4	SPring	1
8-5	WB430-8-5	Washer- ϕ 28x ϕ 39	1
8-6	WB430-8-6	Inner spool	1
8-7	WB430-8-7	Inner spool cap	1
8-8	WB430-8-8	String- ϕ 2.4x2.8m	1
9-1	WB430-9-1	Ribbon	1
9-2	WB430-9-2	Hose	1
9-3	WB430-9-3	Stop Switch Wire	1
9-4	WB430-9-4	Throttle Cable	1
9-5	WB430-9-5	Screw-M6x30	1
9-6	WB430-9-6	Holder A	1
9-7	WB430-9-7	Stop Switch	1
9-8	WB430-9-8	Spring	1
9-9	WB430-9-9	Screw ST3x12	1
9-10	WB430-9-10	locking press button	1
9-11	WB430-9-11	Tigger	1
9-12	WB430-9-12	Spring	1
9-13	WB430-9-13	Screw M6	1
9-14	WB430-9-14	Screw ST4x14	6
9-15	WB430-9-15	The trigger control arm	1
9-16	WB430-9-16	Holder B	1
10	WB430-10	Harness Ass'y	1